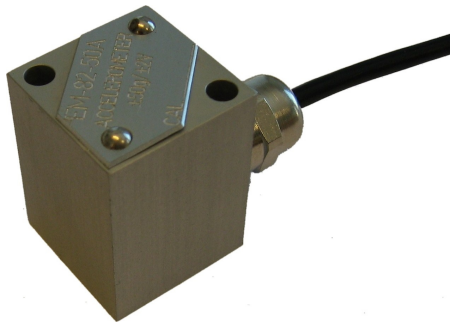


EM-82-05A & EM-82-50A VIBRATION SENSOR



FEATURES

- acceleration sensor
- 5g and 50g version
- good stability
- linear frequency response
- internal buffer amplifier
- wide supply voltage range
- MEMS-type based
- improved EMI-suppression (ver.A)

MOUNTING

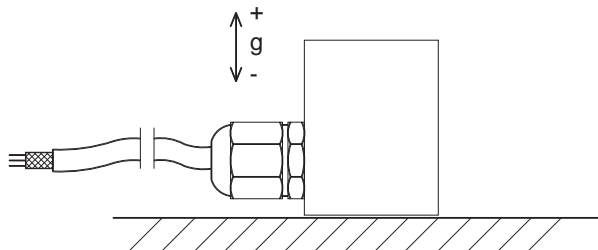
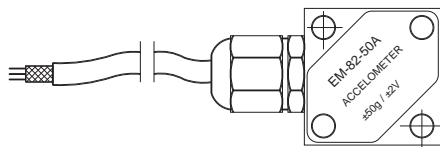
Mounting to base with two M4x40 screws. Depth of thread at least 8mm. Use a crinkle washer under the screw. Use also a screw locking paste to ensure mounting.

tighting torque 3.0 Nm
locking paste Loctite 242

CABLE CONNECTIONS

	PUR	Habia
supply	brown	black
signal	green	brown
gnd	white	blue
shield	shield	shield

Mounting holes
Ø 4.2mm, distance 25,4mm



TECHNICAL DATA

supply	7...32Vdc
current consumption	5mA
operating temperature	-20...85°C
scaling EM-82-05A	400mV/g
EM-82-50A	40mV/g
precision	typ. ± 3% (159Hz)
frequency range	see figure 1&2
measuring range	
EM-82-05A	± 49m/s ² (amplitude)
EM-82-50A	± 490m/s ² (amplitude)
noise level	
EM-82-05A	0.2m/s ² (RMS) (0-2000Hz)
EM-82-50A	1.5m/s ² (RMS) (0-2000Hz)
thermal drift	<0.05% /°C
cable	3m
dimensions	25x25x35mm
housing	IP67
weight	approx. 60 g

fig 1 typ. frequency range EM-82-05A

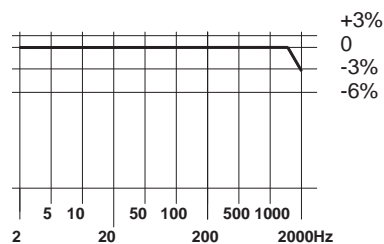


fig 2 typ. frequency range EM-82-50A

